

Software Setup for Mac OS

Tutorial



These instructions are legacy for the V1. If you have a V2 machine please do NOT follow these instructions as they will not work! Follow the Software Startup Tutorial for V2 found on support.pocketnc.com.

Note: There are USB communication bugs in Mac OSX 10.11.1 and 10.11.2. If you haven't yet upgraded, we suggest you wait until later releases to avoid these issues. If you have upgraded, use [this guide](#) as a work around for now.

Download and install the following:

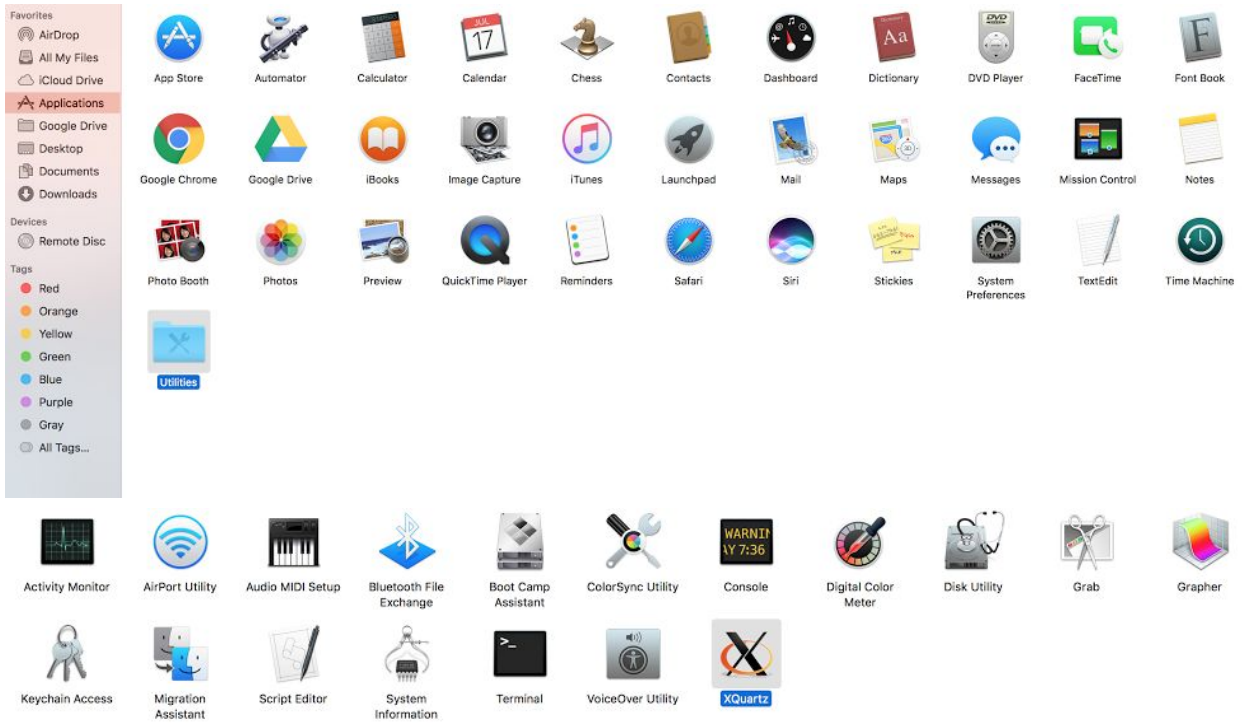
- [XQuartz 2.7.7](#)
- [BeagleBone HoRDNDIS](#)
- [BeagleBone FTDI](#)

*Note: In newer versions of OSX you may have to override settings to allow the install of the drivers. You can learn how to do that [here](#).

To use the machine:

- Turn on your machine and connect via USB to your computer.
- Open X Quartz. See the icon below. If it isn't shown in the applications window, look for it in the "Utilities" folder which is nested under the "Applications." See the screenshots below.





This will also open X Term which you will use to connect to the machine.

Login into your Pocket NC using the command "ssh -Y pocketnc@192.168.7.2".

The password for the machine is "pocketnc". Note that when you type the password, you will not see characters appear.

```
bash-3.2$ ssh -Y pocketnc@192.168.7.2
Debian GNU/Linux 7

BeagleBoard.org Debian Image 2015-02-01

Support/FAQ: http://elinux.org/Beagleboard:BeagleBoneBlack_Debian

default username:password is [debian:temppwd]

pocketnc@192.168.7.2's password:
Last login: Sun Feb  1 18:45:24 2015 from 192.168.7.1
pocketnc@pocketnc:~$ PocketNC
```

Now that we have tested that the SSH connection works, we can test that Xming is working by entering the command **PocketNC** (it is case sensitive).

```
bash-3.2$ ssh -Y pocketnc@192.168.7.2
Debian GNU/Linux 7

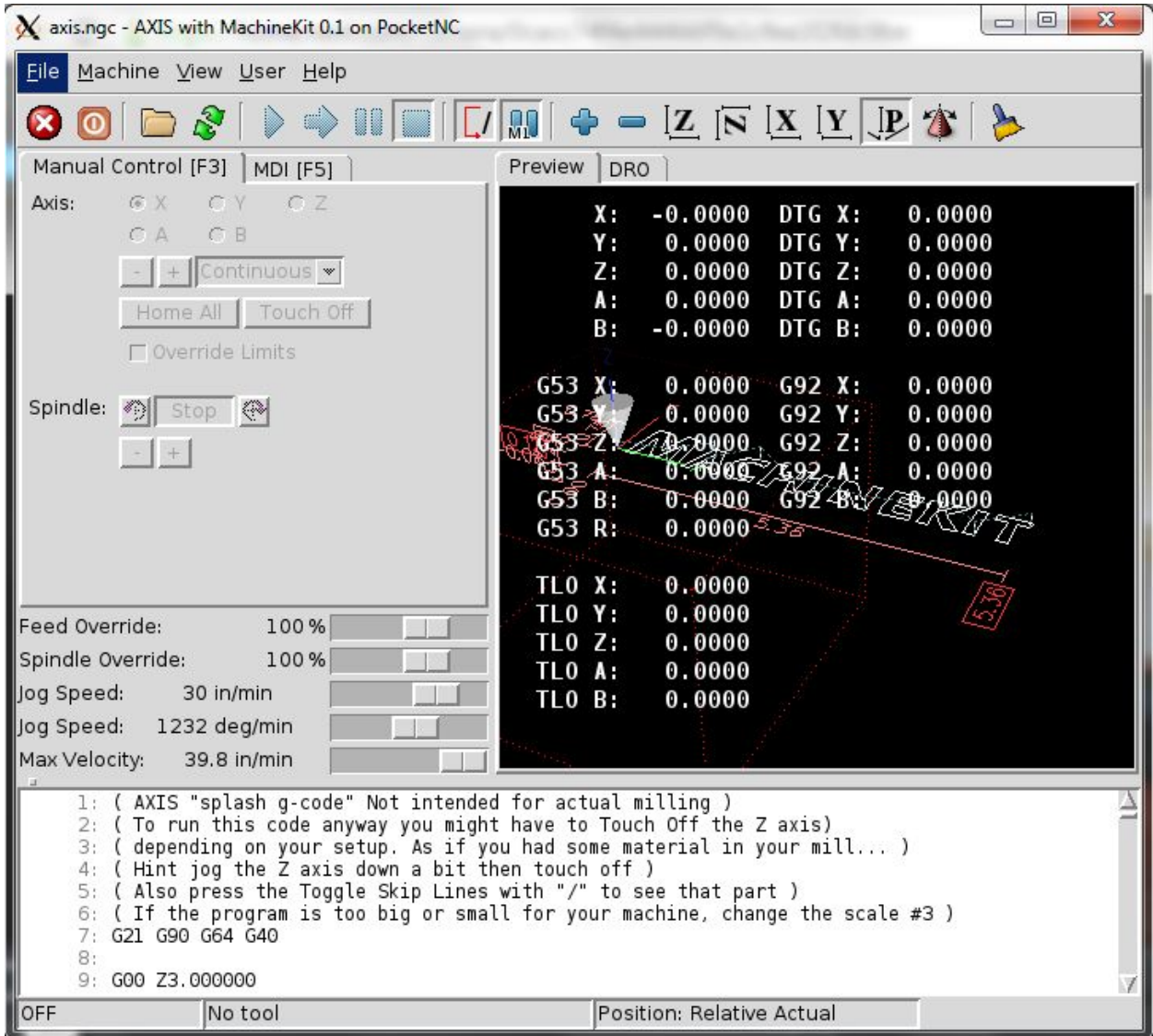
BeagleBoard.org Debian Image 2015-02-01

Support/FAQ: http://elinux.org/Beagleboard:BeagleBoneBlack_Debian

default username:password is [debian:temppwd]

pocketnc@192.168.7.2's password:
Last login: Sun Feb  1 18:45:24 2015 from 192.168.7.1
pocketnc@pocketnc:~$ PocketNC
MACHINEKIT - 0.1
Machine configuration directory is '/home/pocketnc/linuxcnc/configs/ARM,BeagleBo
ne,PocketNC'
Machine configuration file is 'PocketNC.ini'
Starting Machinekit...
io started
halcmd loadusr io started
PocketNCdriver overlay found
cape-bone-iio overlay found
task pid=3090
emcTaskInit: using builtin interpreter
```

- After several seconds you should see LinuxCNC's AXIS window appear, PocketNC uses this program as its CNC control interface.



- Test out your machine by turning E-stop off, Machine Power on, and clicking on **Home All**. For the next steps to get going machining, see the [Uploading and Deleting Files tutorial](#) and the [AXIS Overview tutorial](#).

- Finally, when it's time to close up shop for the day you can power down the Pocket NC machine by closing the AXIS window, and from the console window enter **sudo halt & exit** this will we initiate the shutdown process and close the SSH connection on the way out.